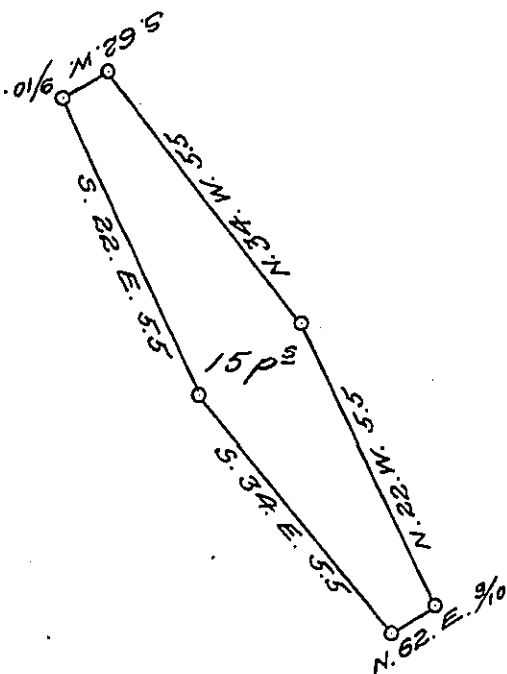


York County Shore



Lancaster County Shore

A Draught of West Island situate in the river Susquehanna in Drumore township Lancaster County opposite the lands of David Brown on the Lancaster shore and land of John Boyd on the York and about ten perches westerly from a small island applied for by Samuel Boyd called Rock Island containing fifteen perches Strict Measure surveyed in pursuance of a Warrant dated the 4<sup>th</sup> day of March A.D. 1816 granted to Samuel Boyd  
 p<sup>s</sup> Jacob Hibshman D.S.

To Jacob Spangler Esq. }  
 Surveyor General }

IN TESTIMONY that the above is a copy of the original remaining on file in the Department of Internal Affairs of Pennsylvania, made conformably to an Act of Assembly approved the 16th day of February, 1833, I have hereunto set my Hand and caused the Seal of said Department to be affixed at Harrisburg, this nineteenth day of November 1907.

*Henry Howard*  
 Secretary of Internal Affairs.